

XOB-2 S Series

Light Source

New
Gen 2

Xicato designs and develops light sources and electronics that enable architects, designers and building managers to create beautiful, smart spaces in which people love to live and work. With thousands of installations around the globe, Xicato continues to be a leading supplier of high quality lighting solutions. Xicato is defining the future of intelligent light sources by integrating electronics, software and connectivity. Founded in 2007, Xicato's headquarters is based in Silicon Valley and the company has offices in China, Europe and the US. For further information, visit xicato.com.

XOB-2

XOB-2 is a Chip on Board (COB) LED light source compatible with industry standard holders, heatsinks, reflectors and lenses used in a variety of downlight and spot fixtures. XOB-2 S Series provides high quality light with best-in-class 1x2SDCM color consistency and superior performance and efficacy in common form factors. Leveraging the latest technology, XOB 2 provides a performance upgrade over previous generation allowing an easy transition for rapid fixture design and faster time to market. XOB-2 are optimized for all indoor lighting applications including downlights, spots, and track heads.

- 1 x 2 SDCM
- 2700K to 4000K CCT
- Options of CRI 90 and 95
- Various LES sizes range including popular 4mm, 6mm, 9mm, 14mm
- Color & Flux warranty
- UL & CE compliant

Ordering Logic

Product Family	LES Size	CRI	CCT	Output Code	Series	Forward Voltage	Color Consistency	Generation
XOB	03 3mm	90 90 CRI	27 2700K	03 3mm Output	S S Series	36 36V	2 1x2 SDCM	2 Gen 2
	04 4mm	95 95 CRI	30 3000K	04 4mm Output				
	06 6mm		35 3500K	10 6mm Output				
	09 9.8mm		40 4000K	15 9mm Output				
	14 14mm			50 14mm Output				

Example:

XOB	06	90	30	10	S	36	2	2
-----	----	----	----	----	---	----	---	---

Performance Characteristics

Preliminary

XOB-2 S Series 90 CRI

LES Size	CCT	Flux		Efficacy	CRI/R9		Voltage			Drive Current		T _J (°C)	Color Consistency	Mechanical Envelop
		Min	Typ	Lm/W	CRI	R9	Min	Typ	Max	Typ	Max	Max		
6mm	2700	889	988	113.3	>90	>50	31.5	35.0	37.8	250	300	125	1x2 SDCM	13.35mm x 13.35mm
	3000	943	1048	120.2										
	3500	972	1080	123.7										
	4000	988	1097	125.5										
9mm	2700	1472	1636	138.7	>90	>50	30.1	33.4	36.1	350	500	125	1x2 SDCM	13.5mm x 13.5mm
	3000	1545	1717	145.4										
	3500	1574	1749	148.2										
	4000	1617	1797	153.0										
14mm	2700	4306	4785	134.5	>90	>50	30.0	33.3	36.0	1050	1400	125	1x2 SDCM	19.0mm x 19.0mm
	3000	4511	5013	140.9										
	3500	4606	5118	143.7										
	4000	4731	5257	148.3										

XOB-2 S Series 95 CRI

LES Size	CCT	Flux		Efficacy	CRI/R9		Voltage			Drive Current		T _J (°C)	Color Consistency	Mechanical Envelop
		Min	Typ	Lm/W	CRI	R9	Min	Typ	Max	Typ	Max	Max		
6mm	2700	761	846	97.1	>95	>80	31.5	35.0	37.8	250	300	125	1x2 SDCM	13.35mm x 13.35mm
	3000	814	904	103.7										
	3500	853	948	108.5										
	4000	886	984	113.3										
9mm	2700	1298	1442	122.6	>95	>80	30.1	33.4	36.1	350	500	125	1x2 SDCM	13.5mm x 13.5mm
	3000	1387	1541	131.1										
	3500	1431	1590	134.9										
	4000	1476	1640	139.7										
14mm	2700	3670	4078	134.5	>95	>80	30.0	33.3	36.0	1050	1400	125	1x2 SDCM	19.0mm x 19.0mm
	3000	3929	4366	140.9										
	3500	4059	4510	143.7										
	4000	4189	4654	148.3										

Please Note:

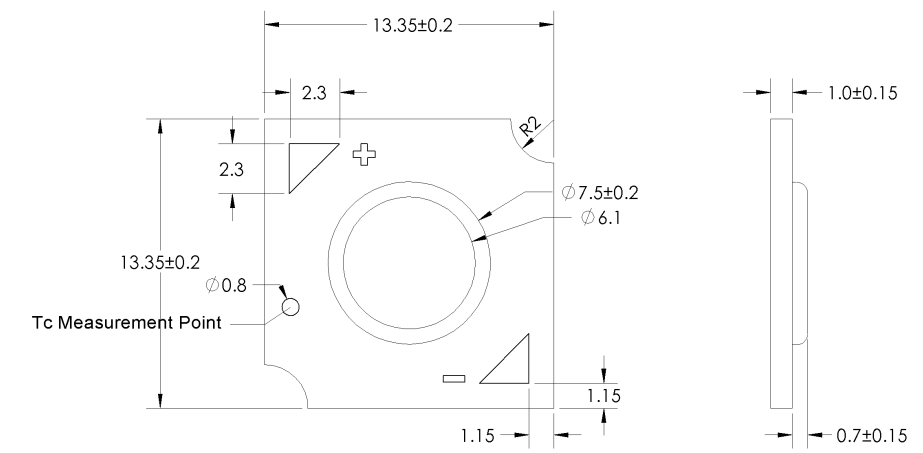
- 1. Data shown in the tables below are taken at a recommended operating test point (TC) temperature of 70°C under pulsed conditions.
- 2. XOB-2 is designed for use with a constant current power supply with maximum output current.
- 3. Power consumption can be calculated from the data provided.
- 4. Specifications are subject to change without notice.
- 5. The tolerance of the measurement at our tester is: Vf ± 5%; Flux ± 7%, CRI ± 1.
- 6. Warranty coverage applies as long as the typical drive current and other operating conditions in this datasheet are met.

Mechanical Dimensions

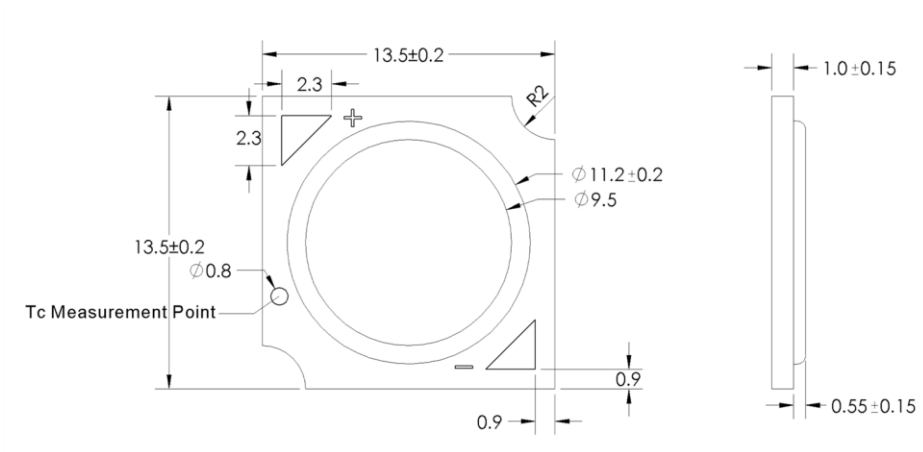
Preliminary

(All measurements in mm)

XOB06 Gen 2



XOB09 Gen 2



XOB14 Gen 2

